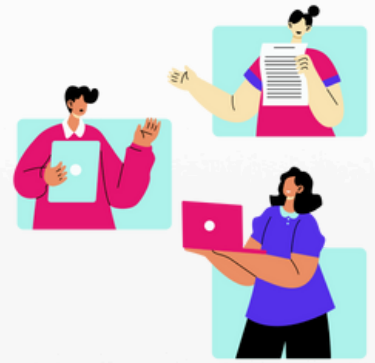


PeerSphere

Professionally Hosted Peer Learning Communities



Session 1 Summaries

Subject Leaders (Secondary)

Date: October 17, 2024

Hosts: Michael Iannini, Shameek Ghosh

Common Challenge: Effective Intercultural Communication in Teams

Community Members shared that their greatest common challenge was communicating effectively with team members, with the intent to effect change and drive top down initiatives. A particularly challenging dimension for many related to communicating interculturally.

Focus Inquiry: Aligning Growth and Promoting Collaboration

Using a consultative process, such as the Focus Inquiry Interview introduced in the meeting, Heads of Department can help team members establish professional inquiries to align team members professional growth needs and promote genuine collaboration.

Professional Inquiry: Solving Questions and Accessing Resources

Through the process of professional inquiry we invite colleagues to solve relevant questions and gain access to invaluable resources, experience and inspiration.



Additional Resources

- * [Session 1 Padlet](#)
- * [Session 1 Recording](#)

Join us to connect and learn with your peers!
#GiveALittleGainALot