



PeerSphere

Harnessing the Power of Collaborative Communities.

Give a little, gain a lot with PeerSphere

VERSION 2

© PeerSphere 2024





We've joined Asia's largest PLC for international schools





Think of ONE great professional learning experience you have had in the past. What was it and what made it great?

Discuss and identify commonalities.



Session Overview

Aims

- ✓ Understand what is PeerSphere and why it matters for us
- ✓ Begin to explore how PeerSphere can add value to our school, our teams and each of us as individuals
- ✓ Be able to connect / set up individual accounts

Outcomes

Each of us will...

- ✓ Identify ONE PeerSphere community that we want to join
- ✓ Have the know how to join
- ✓ Begin to get connecting with our chosen community



PeerSphere

We build thriving communities for international education professionals who collaborate to solve meaningful problems related to their role.



**Thriving
Communities**



**Collaborative
Inquiry**



**Expert
Hosts**



**Strategic
School
Partnerships**



Why PeerSphere?



[Click to hear from PeerSphere's Co-Founder, Michael Iannini](#)



Why PeerSphere?

Learning and Connecting

International school leaders, teaching and non-teaching staff face common problems...

- ... and being a member of a community with professionals in similar roles can help to solve them

The Pains...

- *The Potions...*

Working in a silo

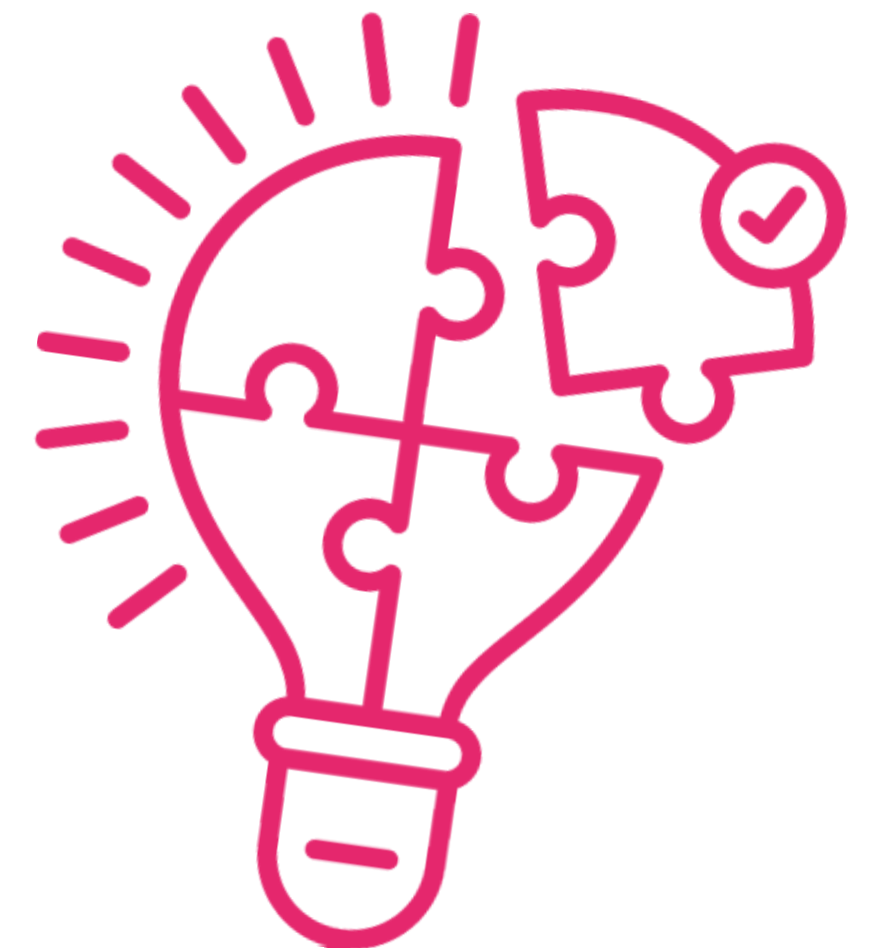
- Collaborate with common professional inquiries

Feeling isolated

- Feel seen and heard by a community experiencing similar challenges

Starving for the right insights

- Learn about topics that are timely and relevant to your needs





Why might PeerSphere be useful to you and your practice?

Think of ONE problem of practice you have faced in the past/might face this coming year. How might joining a cross-school PLC be beneficial to you/your team/our school?



Strengthening Our School Mission

With PeerSphere's School Pass

- School mission / vision / values
- Accreditation standards for professional learning
- Developmental goals at school, team and individual level

At the **School** level

- ✓ Invaluable opportunities for **building capacity** in all our staff members
- ✓ **Unleash potential capacities** that already exist across our school.

At the **Team** level

- ✓ Foster continuous professional learning as **habits** of effective teams
- ✓ Harness **strong implementation practices** for successful outcomes

At the **Individual** level

- ✓ Access **personalized professional learning** pathways that meet diverse needs
- ✓ Learn in alignment with **strategic initiatives**



Take a big next step in your professional learning provision.



Our Impact



92% of respondents agree or strongly agree:
“I have learned something from my peers that positively impacted my work.”

96% of respondents agree or strongly agree:
“Engaging with my peers over the past year has led to valuable learning experiences.”



Peer Coaching Program

"As I prepare to embrace a leadership role next year, the coaching program has been like a compass, guiding me through the complexities of this upcoming role."

- Coachee from the Planning PD Community

"After we asked a series of clarifying questions, we could then ideate with [the coachee] and share our experiences based on a variety of schools where we had all worked."

- Coach from the Global Citizenship Community

[Download the Impact Report](#)



Our Impact



PeerSphere Communities have been a fantastic addition to professional learning for schools and educators. At a time when schools are aiming to be more inclusive in professional learning and find opportunities for staff who are not traditionally well provided for...We look forward to the expansion of the Communities to include more opportunities for staff in supporting and non-teaching roles.

Stephen Taylor

Western Academy of Beijing

It is a great opportunity for us to connect with other librarians and hear their experiences - communications with students, promotion of reading interests, and how to combine classroom reading with libraries. Indeed, I was inspired by some of their amazing ideas and implemented some measures to the library.

Jocelyn Chen

Shenzhen College of International Education

Being part of PeerSphere is a win for our school.

The communities give us the chance to learn from others and showcase our own practices...We plan to remain connected next year and beyond.

Kasson Bratton

Nanjing International School



[Download the Impact Report](#)



How it works?



PeerSphere

Your
Journey
with Us



[Click to watch more about your
journey with us](#)



TEAMS and SMALL GROUPS

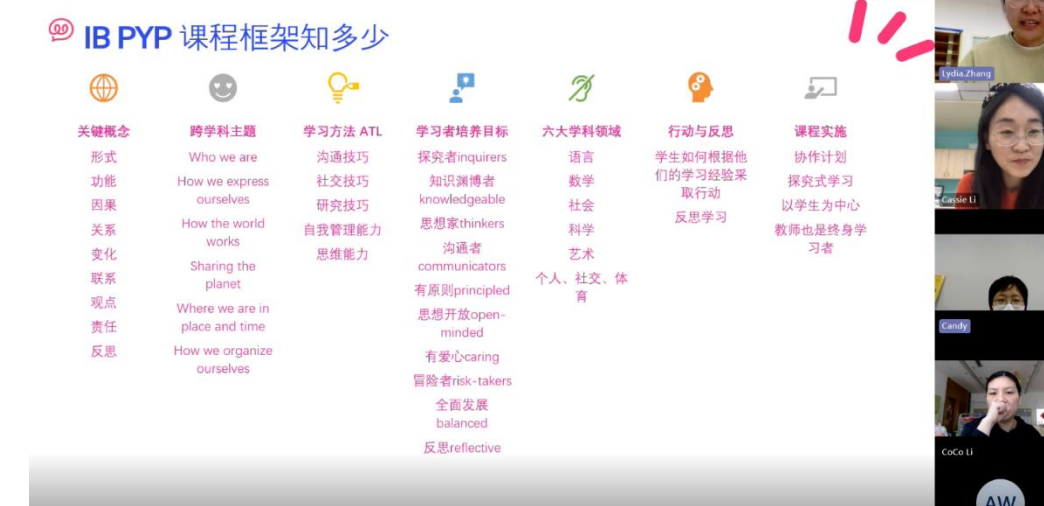
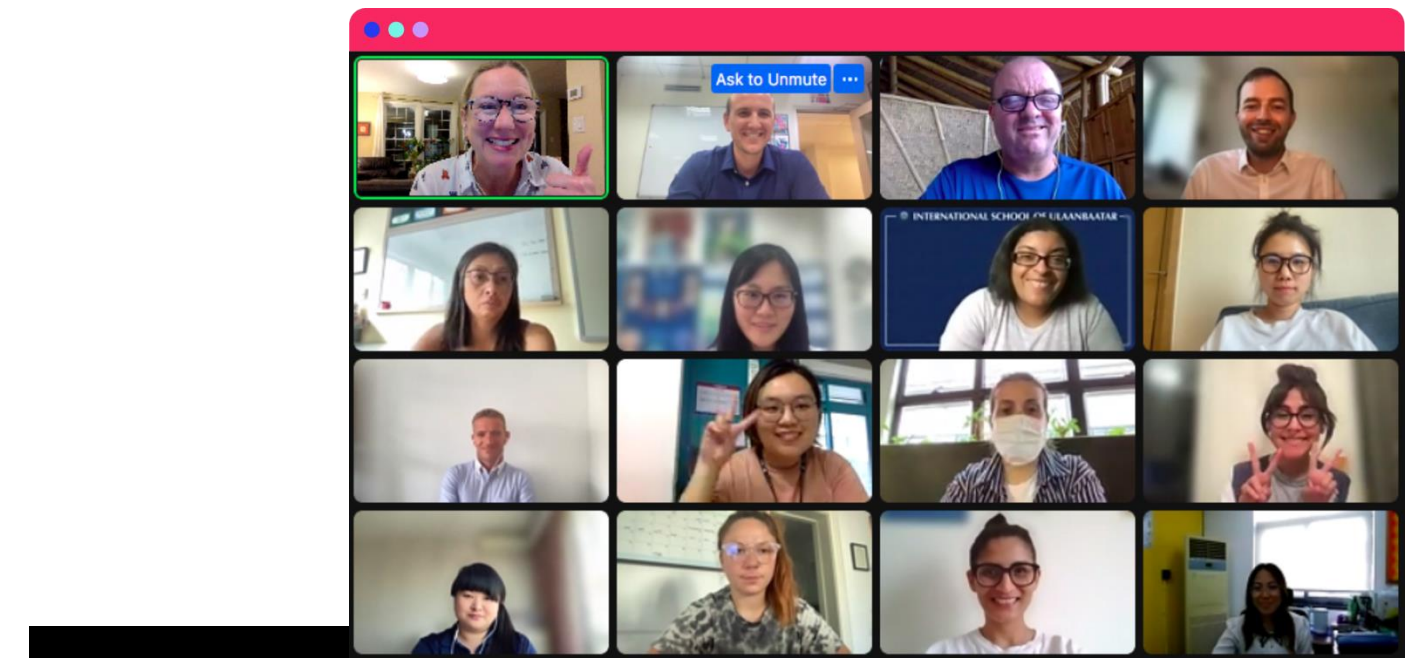
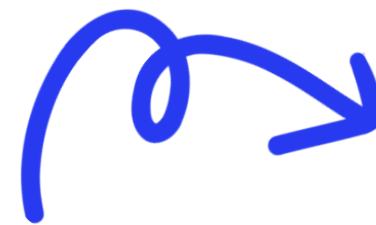
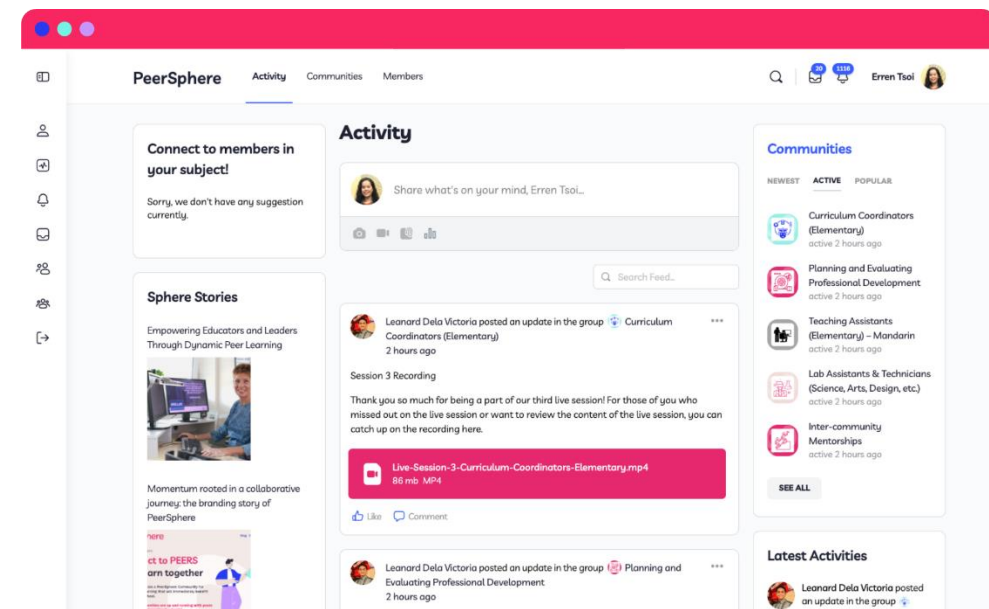
1. Explore PeerSphere community information
(slides 14 onwards)
2. Have conversations about which community you'd like to join
3. Use the sign-up URL and take a first step to connect with your
chosen community



How it works?

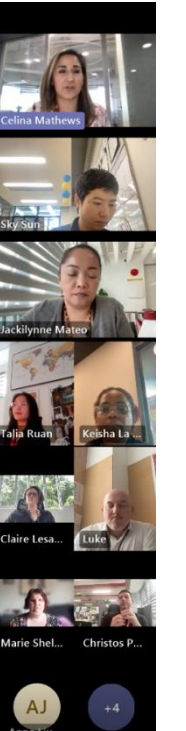
Communities to connect and learn...

- 60+ professionally hosted communities
- Professional and experienced hosts
- 4 virtual 90-min live sessions throughout the school year



Objectives

- Meet & Greet "**Happy Hour**"
- **Select & Discuss** a topic related to language inclusion that meets your needs/wants.
- **Create** a team mind map to demonstrate conversation, thinking, ideas, and/or questions.
- **Showcase** your team's mind map to the community and hear from others on your topic.
- **Discuss** potential topics for Session 5



[Click here to Explore all the Communities.](#)



Your Journey with Us



1. Check-in...

Activation

Check out your community hub, introduce yourself

2. Connect & Engage

Live session 1

Meet your peers & say how and what you want to learn

3. Learn & Grow

Live session 2-3

Learn from others and share your expertise

4. Celebrate

Live session 4

Share your stories of success and shape the future of your community



PeerSphere

There's so
much more...



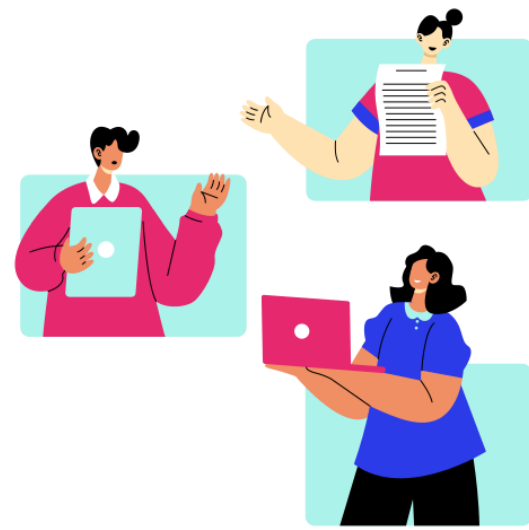
[Click to watch what else we include in your membership](#)



There's so much more...



With opportunities to dive deeper ...



Peer Coaching

Pair up with another PeerSphere member and apply our coaching model to help you grow



Peer-to-Peer Events

Face to face events every month in cities across China and East Asia



Inter-community Webinars & Networking

Hear from experts on important topics and connect with peers from all of our communities



Conferences

Free virtual access to conferences for Teaching Assistants and Non-Teaching Staff



Get Started!

Forward email with School Member Activation Link to staff

Link: Members Handbook

Deadline for signing in: Wednesday 10th October



About Us



Michael
Iannini

- ACAMIS's Leadership Development Facilitator
- Search Associates Contracted HR PD Coordinator for China
- Affiliated Council of International School's (CIS) consultant
- Areas of expertise: **Appraisal and professional development, Leadership training, School governance, and Strategic planning.**



Ewen
Bailey

- Education Consultant, PD Academia
- Professional Development and Learning expert
- Experienced international leader in education who supports teachers and leaders to build resilient, collaborative teams that focus on continuous improvement



Peer Learning Research

Read about the power of peer learning



- How Research Shows Peer Learning is Effective PD [read on](#) (*PeerSphere*)
- The Buzz about Peer Learning [read on](#) (*PeerSphere*)
- 4 steps for Creating Stronger, More Collaborative Teacher Teams [read on](#) (*ASCD*)
- The Power of Peer Learning: A Budget-Friendly, Sustainable and Dynamic Approach for Professionals [read on](#) (*Forbes*)
- Reconfiguring Teacher Collaboration [read on](#) (*Education Development Trust*)

[Check out more stories on our Blog](#)



Thank you!