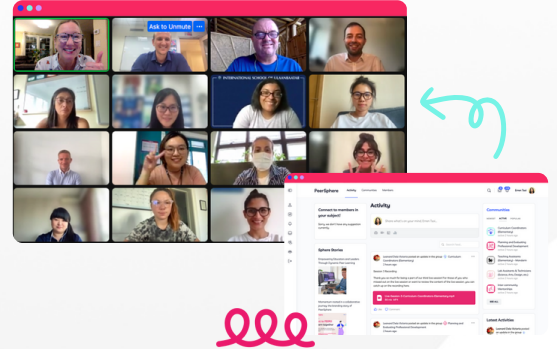


PeerSphere

Professionally Hosted Peer Learning Communities

We build thriving communities for education professionals that want to collaborate and solve meaningful problems related to their role.

Check out our 60+ communities ✨

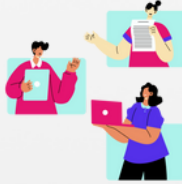


Member Benefits



Community Live Sessions

Four 90-minute professionally hosted virtual live sessions throughout the school year



Peer Coaching Program

Pair up with another PeerSphere member and apply our coaching model to help you grow



Peer-to-Peer Events

Face-to-face topical events every month in cities across China and East Asia



Webinars & Networking

Hear from experts on important topics and connect with peers from all of our communities



Virtual Conferences

Free virtual access to conferences for Teaching Assistants and Non-Teaching Staff



Join other communities

Join as many of our 60+ communities as you like!

Your Journey with Us

Check-in
Pick your first choice community

Connect & Engage
Meet your peers and hosts in our live sessions

Learn & Grow
Gain insights and share your expertise

Dive Deeper
Take part in peer coaching and other events

Develop inspiring professional connections

Why Are We Special?

- ✓ **Dynamic and Generative**
Professionally hosted live sessions that are responsive to the needs of our members
- ✓ **Flexible and Holistic**
Explore any topic of interest by joining multiple communities, attend our monthly in-person events, and go deeper with peer coaching
- ✓ **Authentic and Peer-led**
You and your peers will decide what and how you want to learn

What Our Members Are Saying

“It was really great to connect with other professionals dealing with the same challenges and similar visions.”

- Brett Searl, Assistant Principal at BIBA

“At each of our leadership sessions at school, things from our PLC experiences came into our conversations, everything from child protection to support for teachers’ mental health. We started implementing and trying new things this year based on those conversations.”

- Ryan Godlewski, Head of School at AIAN

Take Your School on a Journey with PeerSphere's

School Pass

1 Price,
Unlimited
Access!

Your school can enjoy

- ✓ Unlimited memberships at a price tailored to your needs
- ✓ A dedicated Professional Learning Specialist to support you to maximize PeerSphere's impact on your school

Your staff can enjoy

- ✓ Unlimited access to 60+ communities - For your teachers, TAs, leaders, and admin staff
- ✓ Peer coaching, peer-to-peer events, webinars, networking events, and virtual conferences
- ✓ Discounts to our partners' events

Once you get your pass, we'll take care of you every step of the way ...

- ✓ Welcome pack to help you get started
- ✓ Supporting you to bring your colleagues on board
- ✓ Celebrating and sharing new ideas in action

Pricing

School Pass starts from as little as US\$100/person* (full price is US\$290)!

*School passes are priced based on estimated usage, as well as other incentives. Please [schedule a call](#) to learn how to get the maximum discount.

Discount Incentives

- ✓ Renewal* - 10% (we make sure our current members get the best prices)
 - ✓ Early Bird* - 10%
- *Both expire on June 30th.
- ✓ Promoting to all staff - 5%
 - ✓ Sharing our expression of interest survey - 5%

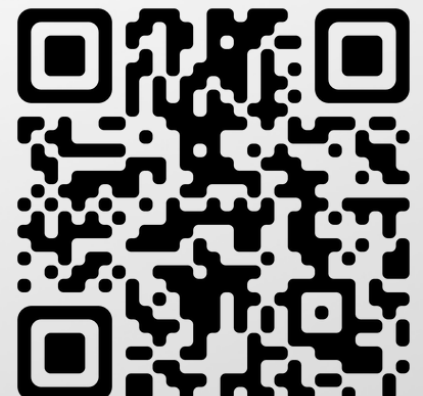
Guaranteed Discounts

- ✓ ACAMIS/EARCOS members - 10%

[Book a Free Consultation!](#)

To find out more and get your [free professional development consultation](#), email us at info@peersphere.com or [book a call](#) with one of our co-founders by scanning the QR code.

We look forward to hearing from you!



PeerSphere builds communities for educators and school administrative staff that provide:

- **Generative Learning:** Based on relevant and timely topics for our members.
- **Collaboration:** Encourage sharing of ideas, resources, and best practices.
- **Purpose:** Facilitate meaningful conversations that inspire action.
- **Perspective:** Broaden the members' perspectives through mutual understanding of regional contexts.
- **Inclusion:** Ensure all members feel seen, heard, and understood.

60+ Peer Learning Communities suiting a broad range of job roles and addressing various themes, across these categories:

- Administrative Support
- Elementary / Early Years
- Secondary
- Whole School / Specialist

Community Live Sessions Date/Time

Live Session 1: October / November
Live Session 2: November / December
Live Session 3: February / March
Live Session 4: March / April

Live Sessions generally start at 10:30am, 5pm or 7pm (HKT) on weekdays.



Thriving Together: What Our Members Are Saying About Us

“The host went straight to the PLC aspect, letting us voice needs and allowing other participants to help provide insights.”

- Jordan Williams, [Librarians](#)

“It’s a great resource for members who have the same or similar position. Having this community makes it much easier to reach out for advice.”

- Alex Billups, [Marketing & Admissions](#)

“I think this is a good place for people who are in the same field to share their thoughts and experiences.”

- Yuping Zhan, [Operations & Facilities Management](#)

“Knowledgeable, useful to connect with peers and hear how they are working in similar situations.”

- Michelle McEwan, [Learning Support Specialists](#)

Administrative Support

- After School Activities Management (CN)
- Finance Managers (CN)
- Human Resource Leaders
- Lab Technicians - Science (CN)
- Library Assistants (CN)
- Non-Teaching Staff - New to International School Leadership (CN)
- Non-Teaching Staff - New to International School Leadership
- Marketing & Admissions
- Operations and Facilities Management (CN)
- Operations and Facilities Management
- Personal Assistants (PAs) and Secretaries (CN)
- Personal Assistants (PAs) and Secretaries
- Teaching Assistants, Elementary (CN)
- Teaching Assistants, Elementary

Elementary / Early Years

- Curriculum Coordinators (Elementary)
- Early Childhood Education - Leadership (APs & Coordinators)
- Early Childhood Education - Practices and Pedagogy
- Grade Level Leaders (EY / Elementary)
- Literacy Coaches and Coordinators (Elementary)
- Mathematics Teachers (Elementary)
- New to Senior Leadership (Elementary)
- Principals (Elementary)

Secondary

- Assistant / Vice Principals (Secondary)
- Biology Teachers (Secondary)
- Business Management / Economics Teachers (Secondary)
- Chemistry Teachers (Secondary)
- Chinese Teachers - Secondary (Chinese)
- College Counselors
- Curriculum Coordinators (Secondary)
- English Literature Teachers (Secondary)
- Mathematics Teachers (Secondary)
- Non-English Language Acquisition Teachers (e.g. Spanish, German, Korean, Chinese)
- Pastoral Heads of Grade (Secondary)
- Performing Arts - Developing your Practice (Secondary)
- Physics Teachers (Secondary)
- Principals (Secondary)
- Product Design Teachers (Secondary)
- Subject Leaders (Secondary)

Whole School / Specialists

- ACAMIS Heads of School
- Aspiring Senior Leaders - Getting Promoted
- Athletics Directors
- Coaching in Education
- English Language Learning (ELL) Specialists
- E-Sports
- Global Citizenship and Service Learning Educators
- Inclusive Workplaces (DEIJ)
- Learning Support Specialists (Inclusion)
- Librarians
- New to Middle Leadership
- Outdoor Learning
- Physical Education (PE) Teachers
- Planning and Evaluating Professional Development
- Project Based Learning
- Safeguarding / Child Protection
- Social and Emotional Counseling
- Student Leadership
- Tech Directors & Coordinators
- Tech/AI in the Classroom
- Visual Arts
- Wellbeing
- Women in Education - Book Club
- Women in Leadership

*All Communities hosted in English unless otherwise stated. (CN = Chinese)



PeerSphere

Learning that immediately benefits our members and their school.

Impact Report

4.4/5
average rating



500+ members review

85%

of members are likely to recommend PeerSphere to a colleague.

Outcomes

PeerSphere members are using learning from PeerSphere communities to improve student outcomes:

"At each of our leadership sessions at school, things from our PLC **experiences** came into our conversations, everything from child protection to support for teachers' mental health. We started **implementing** and trying new things this year based on those conversations"

- Ryan Godlewski, Head of School at AIAN

"These '**peers**' have really helped me with **ideas** for student leadership organisations."

- Student Leadership Community Member

"The PeerSphere live session has enhanced my **knowledge** and understanding of the college counseling work dynamic. Through **shared** experiences, I have gained valuable **insights** that benefits my students' college preparation journey. Thank you for this opportunity!"

- College Counselors Community Member

Impact Snapshot

92%

of respondents agree or strongly agree:

"I have learned something from my peers that positively impacted my work."

91%

of respondents agree or strongly agree:

"I have learned something from my peers that positively impacted student learning."

96%

of respondents agree or strongly agree:

"Engaging with my peers over the past year has led to valuable learning experiences."

